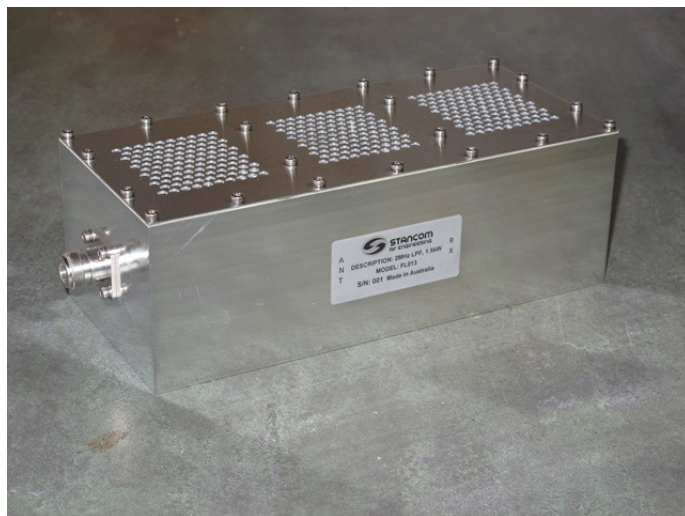


The FL013 is a multi-element filter. It is used in high power application to remove unwanted harmonics from Transmitters. The filter is designed to take a high power level of at least 1500W RF.



Specification:

<u>Parameter</u>	<u>Limits</u>
Frequency Range	DC – 2.2MHz
Pass Band Loss DC – 2.2MHz	<0.15dB.
Pass Band Return Loss DC – 2.2MHz	< -14dB. (VSWR Better than 1.5:1)
Rejection 3.0 - 4.5MHz	< -30dB
Rejection 4.5 – 30MHz	< -45dB
Input Impedance	50Ω
Output Impedance	50Ω
Power Handling	1500W Max.
Max VSWR	3:1
Case Size	225 x 100 x 75mm
Connectors. (Input and Output)	N type Female